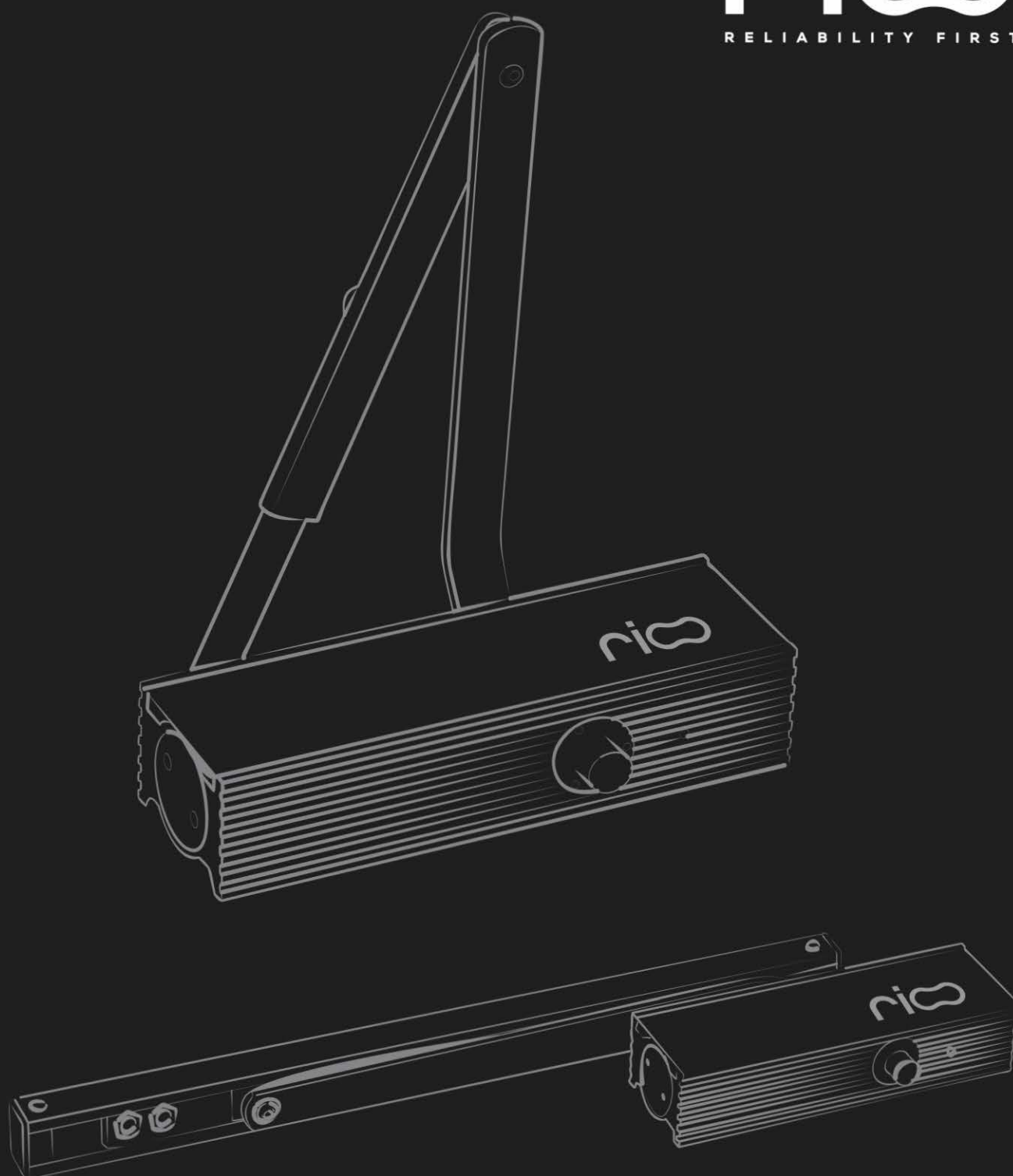


rio  
RELIABILITY FIRST



Door  
CLOSER

INQUE Group



INQUE GROUP is an Indian conglomerate headquartered in Mumbai with its established, experienced and esteemed roots founded by a family that created the ENOX brand which has been a market leader.

In the year 2014, A Swedish multinational company named ASSA ABLOY acquired ENOX, a branch of business that deals in locks and hardware. At that time. We were the market leader employing 220 passionate employees in our team.

Since the Kitchen Hardware business was not acquired from our product portfolio, we decided to continue our Kitchen Hardware under the INQUE brand. Since then, INQUE was born as a modular kitchen solutions provider.

Headed by the best in the industry, Mr Divyesh Shah & Ms. Rupa Shah, INQUE Group is under the company Red Plus Interiors India Private Limited. INQUE Group is a home improvement company, providing multiple solutions with these indigenous brands under its umbrella - AVEO Linea glass and sliding solutions, INQUE Modular kitchens & wardrobes, REDPLUS Demountable Partitions, IDENICO acoustic solutions and RIOO Digital Door Locks.

Our HQ & Experience Center is Located in Andheri Mumbai. With 3 manufacturing units & warehouses spanning across 1,50,000sq.feet & a passionate team-based Pan- India, INQUE Group excels in providing top notch quality solutions and services anywhere in India.

## INQUE Group



Security is your concern; and ours is specialty. At RIOO, we believe your assets deserve better security that's easy to set up and use, and requires minimal attention and care while providing security and ease which cannot be compromised.

Established in 2015 as a Digital Door Lock brand, RIOO now has complete door hardware solutions along with home automation under its umbrella of products & services. A professional security smart solution provider, RIOO was born in Mumbai, India with its wings spread all across the country. With its distinct features in the digital lock systems, we have superior quality Digital Locks with 5-in-one features.

Our Keyless Solutions bring you the convenience to unlock your main door lock with Fingerprint, RFID Card, Mechanical Key, PIN Code or Mobile APP. Our Digital And Mechanical Security Locks (Mortise, Deadbolt, Rim, Cabinet) are continually pushing the limits of home security which works easily with doors.

Our locks are safe, strong and secure and have been tested to withstand adverse conditions. Not only are they technologically advanced but also have a high style quotient. With its sleek and contemporary design, they can aesthetically elevate your spaces. Customised designs are available for commercial, multi-family and mixed-use applications. RIOO products offer quality and value together while continuing the tradition of excellence every day. Today, countless people trust us and we believe it's just the beginning.

### VISION

To upgrade the community by evolving from the traditional mechanical locks to digital and affordable Door Lock Solutions.

### MISSION

To present an excellent digital & mechanical door solution hardware range with latest technologies and commendable service to our valued customers globally.



Mrs. BHAVNA SHAH  
CHAIRPERSON

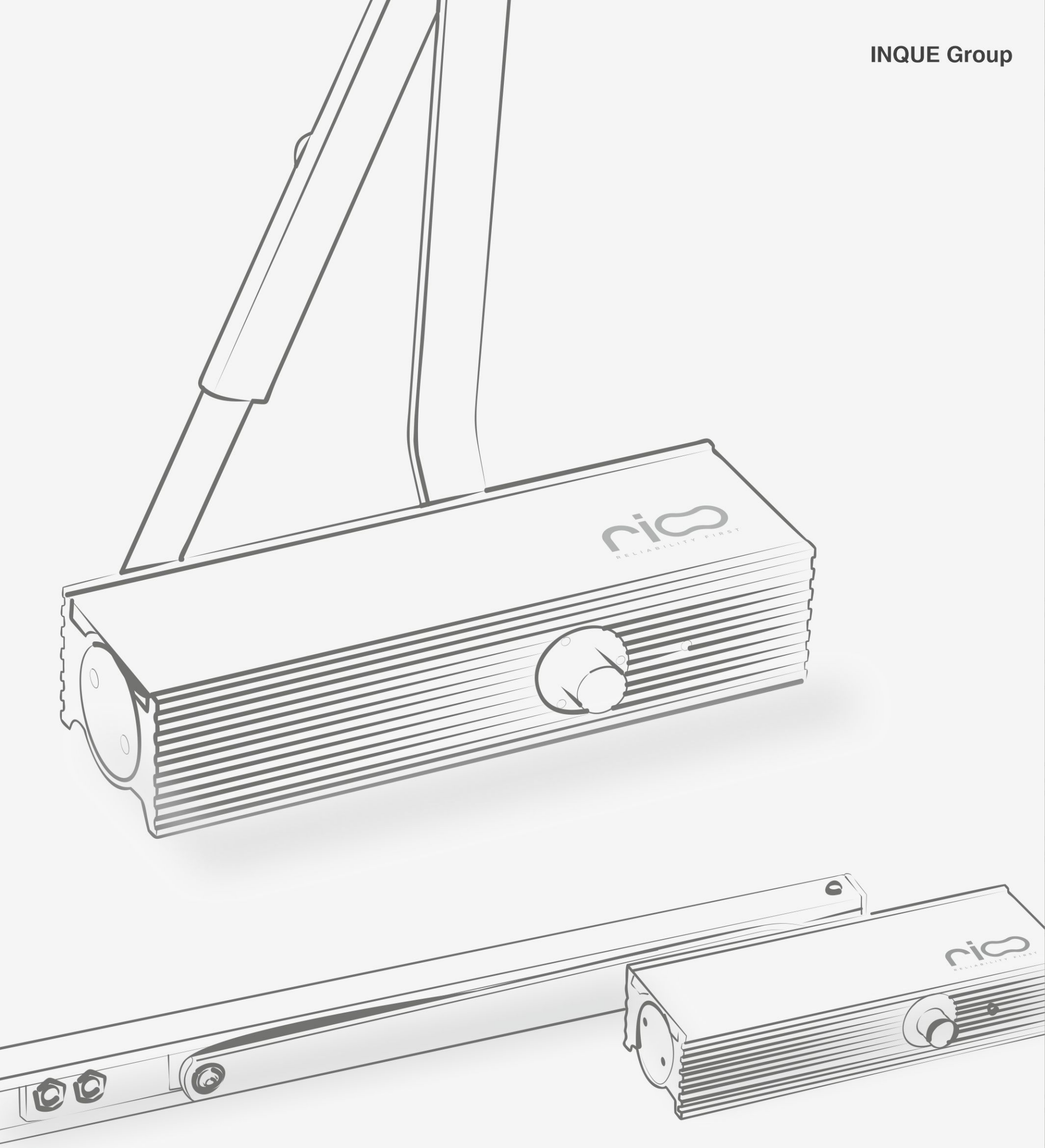


Mr. DIVYESH SHAH  
MANAGING DIRECTOR



Mrs. RUPA SHAH  
CEO





# CONTENT

RTS 845	Standard Arm Door Closer (EN 2 / 45 kg)	Page 4-5
RTS 860	Standard Arm Door Closer (EN 2/3 / 60 kg)	Page 6-7
RTS 980 SHO	Slide Arm with Hold Open (EN 2/3 / 80 kg)	Page 8-9
RTS 980	Standard Arm Door Closer (EN 2/3 / 80 kg)	Page 10-11
RTS 1000	Standard Arm Door Closer (EN 2/4 / 100 kg)	Page 12-13
RTS 1000 SHO	Slide Rail with Hold Open (EN 3/5 / 100 kg)	Page 14-15
RITS 4080	Concealed Door Closer (EN 3 / 60 kg)	Page 16-17



## RTS 845

Standard Arm Door Closer

### SPECIFICATION

- Fully hydraulically controlled adjustable closing speed in two independent ranges (180°-15° and 15°-0°)
- Maximum Door weight - upto 45kg
- Maximum Door width - 850mm
- Closing force 2 according to EN
- CE & ISI standard approved
- 5 Lac cycle tested approved EN-1154
- Fire resistance approved according to EN-1634
- Aluminium extrusion body - Longevity
- Fire resistance EN-1634
- Thermal check range -10°C & 50°C
- The Closer is universal for Right Hand & Left Hand Door



Silver (SL)

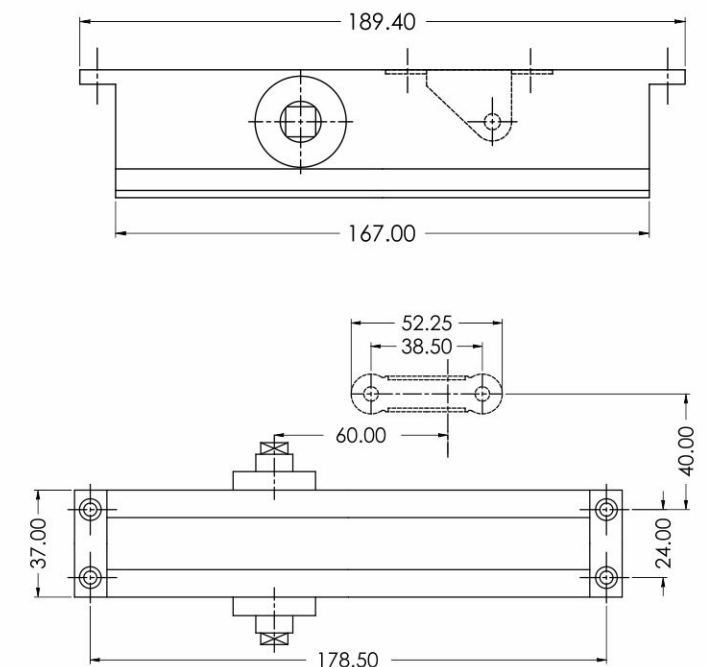
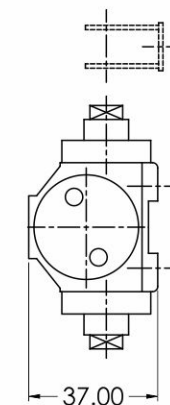
MRP: ₹ 1,450 /-



Black (BL)

MRP: ₹ 1,750 /-

### TECHNICAL DETAIL





## RTS 860

Standard Arm Door Closer

### SPECIFICATION

- Fully hydraulically controlled adjustable closing speed in two independent ranges (180°-15° and 15°-0°)
- Maximum Door weight - upto 60kg
- Maximum Door width - 950mm
- Closing force 2/3 according to EN
- CE & ISI standard approved
- 5 Lac cycle tested approved EN-1154
- Fire resistance approved according to EN-1634
- Aluminium extrusion body - Longevity
- Thermal check range -10°C & 50°C
- The Closer is universal for Right Hand & Left Hand Door



Silver (SL)

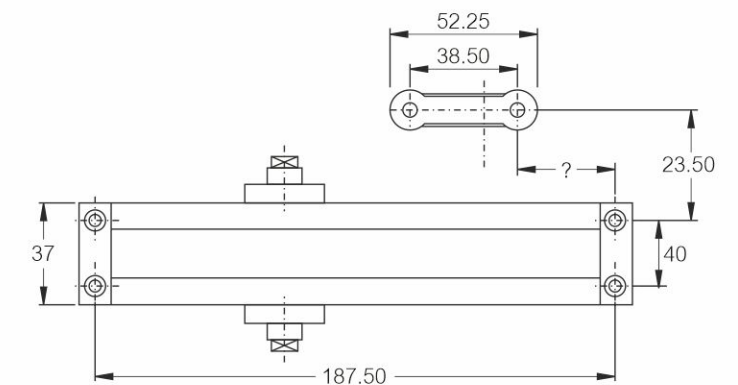
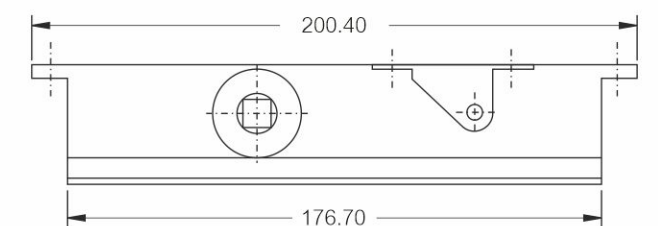
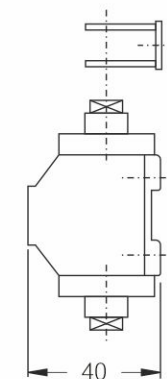
MRP: ₹ 1,650 /-



Black (BL)

MRP: ₹ 1,950 /-

### TECHNICAL DETAIL





# RTS 980 SHO

Slide Arm with Hold Open

## SPECIFICATION

- Any Degree Hold-open function optional
- Fully hydraulically controlled adjustable closing speed in two independent ranges (180°-15° and 15°-0°)
- Maximum Door weight - upto 80kg
- Maximum Door width - 1100mm
- Closing force 2/3 according to EN
- CE standard approved
- Aluminium extrusion body - Longevity
- Thermal check range -10°C & 50°C
- The Closer is universal for Right Hand & Left Hand Door

EN1154  
COMPLIANCE



Silver (SL)

MRP: ₹ 2,750 /-



Black (BL)

MRP: ₹ 3,375 /-



Antique Brass (AB)

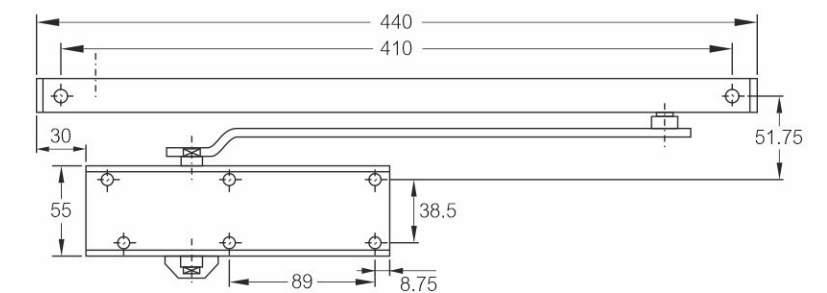
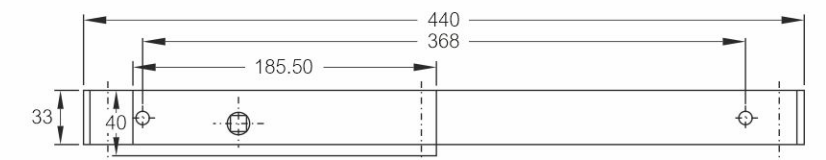
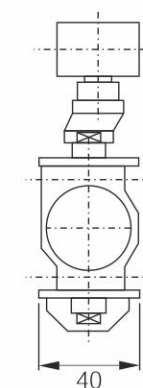
MRP: ₹ 3,675 /-



Rose Gold (RG)

MRP: ₹ 3,375 /-

## TECHNICAL DETAIL





## RTS 980

Standard Arm Door Closer

### SPECIFICATION

- Fully hydraulically controlled adjustable closing speed in two independent ranges (180°-15° and 15°-0°)
- Maximum Door weight - upto 80kg
- Maximum Door width - 1100mm
- Closing force 2/3 according to EN
- CE standard approved
- 5 Lac cycle tested approved EN-1154
- Fire resistance approved according to EN-1634
- Aluminium extrusion body - Longevity
- Thermal check range -10°C & 50°C
- The Closer is universal for Right Hand & Left Hand Door



Silver (SL)

MRP: ₹ 2,250 /-



Black (BL)

MRP: ₹ 2,875 /-



Antique Brass (AB)

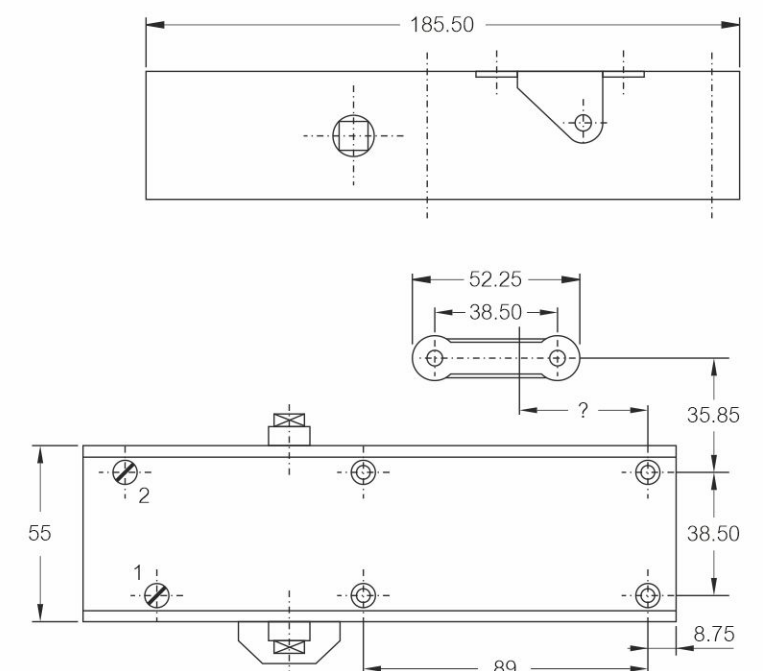
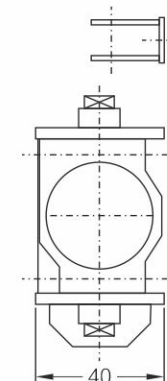
MRP: ₹ 2,875 /-



Rose Gold (RG)

MRP: ₹ 3,250 /-

### TECHNICAL DETAIL





## RTS 1000

Standard Arm Door Closer

### SPECIFICATION

- Any Degree Hold-open function optional with Pelmet Arm
- Fully hydraulically controlled adjustable closing speed in two independent ranges (180°-15° and 15°-0°)
- Maximum Door weight - upto 100kg
- Maximum Door width - 1250mm
- Closing force 2/4 according to EN
- Aluminium extrusion body
- Thermal check range -10°C & 50°C
- The Closer is universal for Right Hand & Left Hand Door

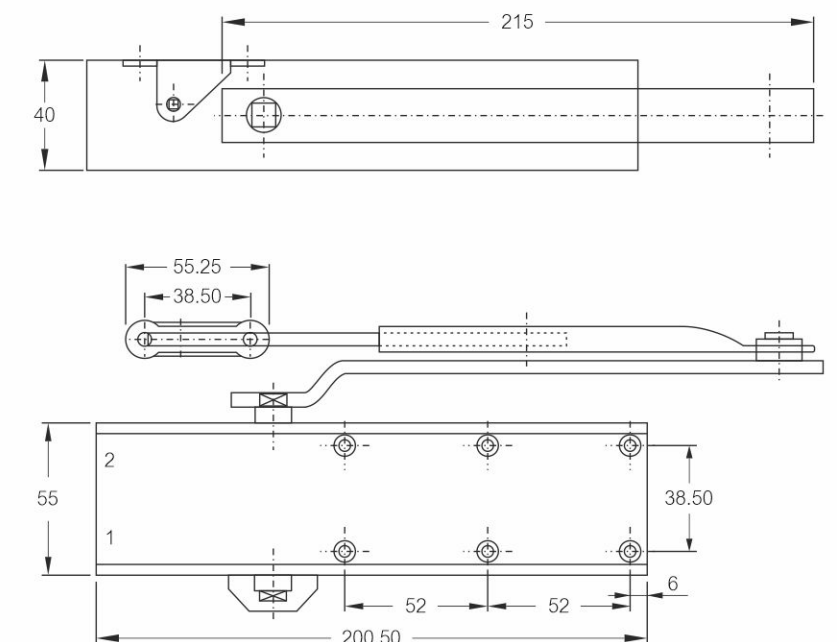
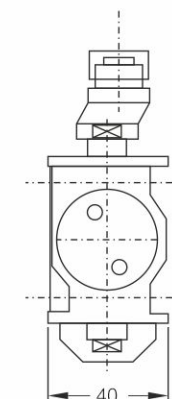
EN1154  
COMPLIANCE



Silver (SL)

MRP: ₹ 3,000 /-

### TECHNICAL DETAIL





# RTS 1000 SHO

Slide Rail with Hold Open

## SPECIFICATION

- Any Degree Hold-open function optional with Pelmet Arm
- Fully hydraulically controlled adjustable closing speed in two independent ranges (180°-15° and 15°-0°)
- Maximum Door weight - upto 100kg
- Maximum Door width - 1250mm
- Closing force 3/5 according to EN
- CE standard approved
- Aluminium extrusion body
- Thermal check range -10°C & 50°C
- The Closer is universal for Right Hand & Left Hand Door

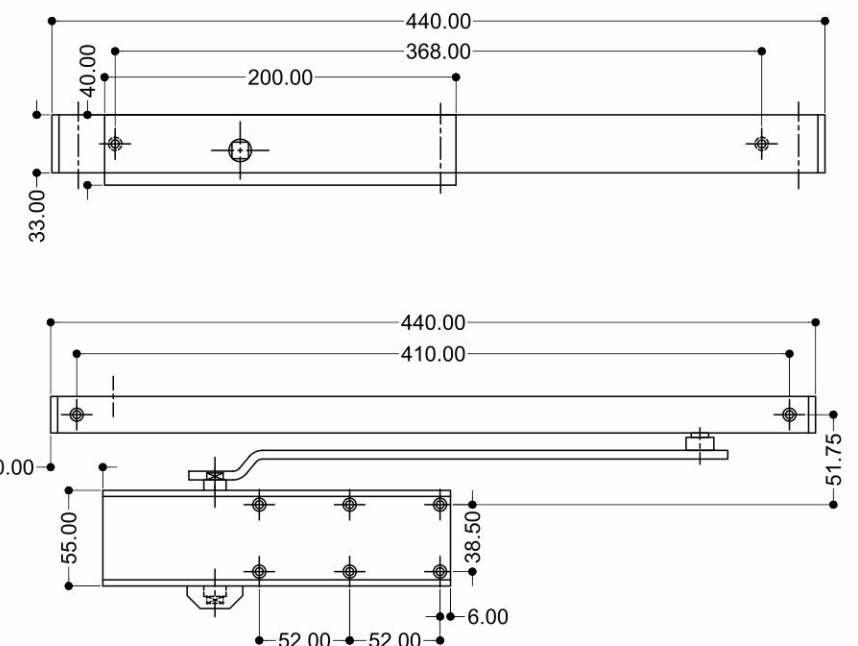
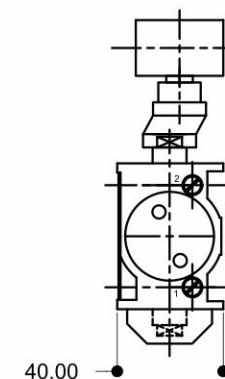
EN1154  
COMPLIANCE



Silver (SL)

MRP: ₹ 3,250 /-

## TECHNICAL DETAIL



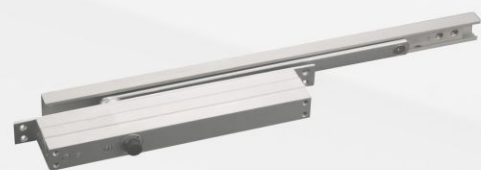


# RITS 4080

Concealed Door Closer

## SPECIFICATION

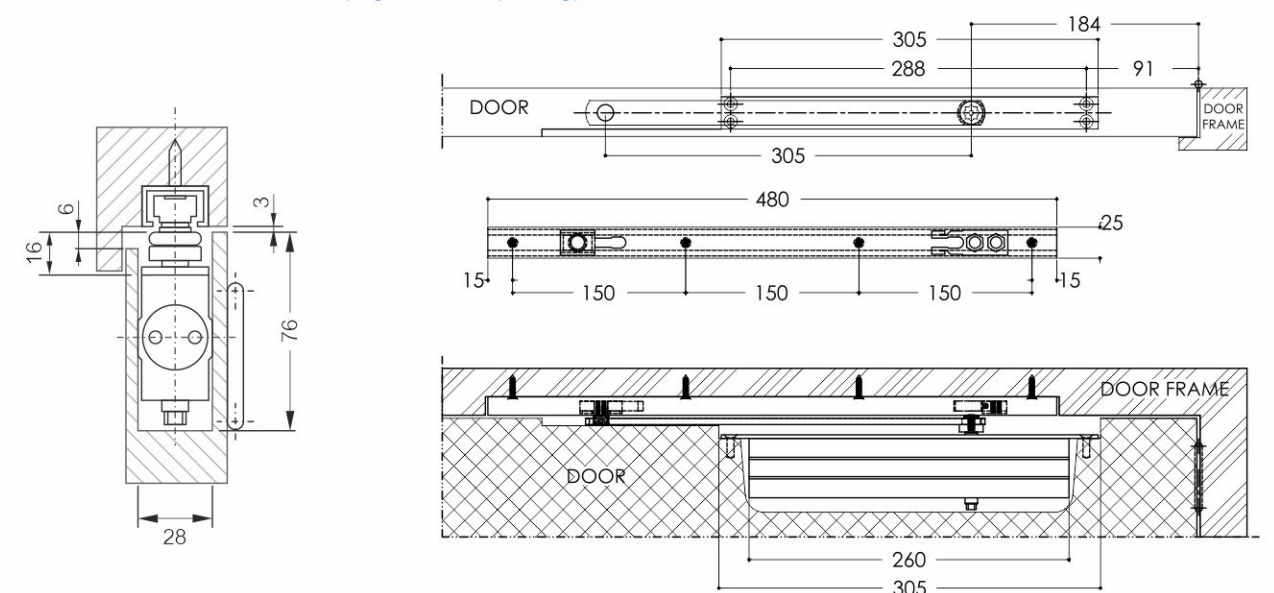
- Fully hydraulically controlled adjustable closing speed in two independent ranges (180°-15° and 15°-0°)
- Maximum door weight - upto 60kg
- Maximum door width - 950mm
- Minimum door thickness for installation - 35mm
- Aluminium Extrusion body - Longevity
- Thermal check range - 10° & 50°C
- Any Degree Hold-open function optional with Pelmet Arm
- The Closer is universal foe Right Hand & Left Hand Door



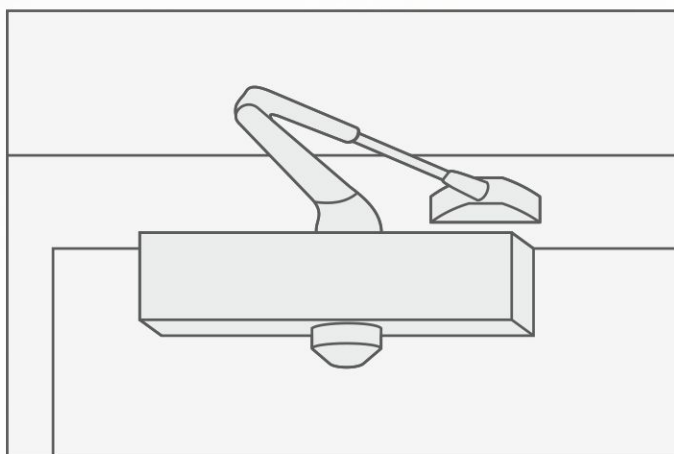
Silver (SL)

MRP: ₹ 6,500 /-

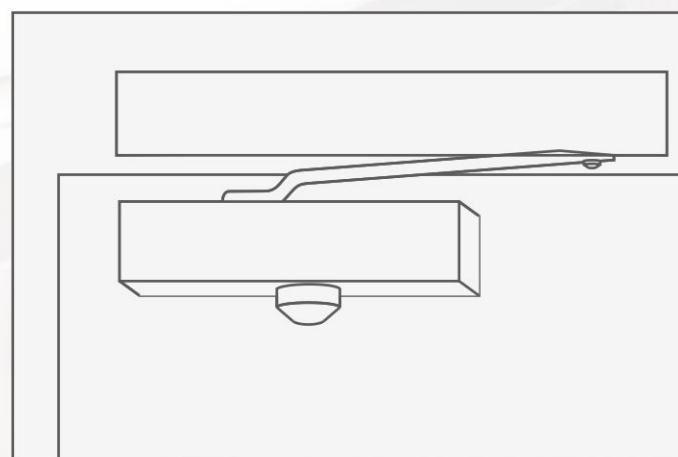
## TECHNICAL DETAIL (Right Hand Opening)







## Regular Projecting Arm



### Parallel Arm

## Notes

This image shows a full page of a blank sheet of white paper with horizontal ruling lines. The lines are evenly spaced and run across the width of the page. In the top-left corner, there is a small blue icon of a pencil writing on a piece of paper, followed by a short horizontal line segment.





This image shows a full page of blank, lined paper. It features approximately 20 evenly spaced horizontal gray lines across the entire width of the page, providing a guide for writing. The background is a clean, solid white color. There are no margins, text, or other markings present.

- The technical presentation and dimension in illustration and drawing are non binding we reserve the right to make change to specifications at any time.
- We do not accept any responsibility for any errors which may occurs in the production of this catalogue all size in mm & inches.
- The printed color indicating the surface finishes are not 100% true but do provide a useful guide .
- Picture may show design which are different to be the standard scope of delivery.
- Product prices are subject to change without prior notice.
- Routine cleaning is essential, especially in environments that have elevated levels of atmospheric corrosion. Company has mechanism warranty not for Red spot or Rust, Proper care for your stainless steel door hardware will result in many years of durable use.



**INQUE Group**



## **RED PLUS INTERIORS INDIA PRIVATE LIMITED**

C 8/9/10, Hind Saurashtra Industrial Estate,  
Andheri - Kurla Rd, Nr Mittal Ind. Estate,  
Marol Naka, Andheri (E), Mumbai-400059.

Mob.: +91 90907 09011  
W: [www.rioo.in](http://www.rioo.in)

Mumbai | Agra | Ahmedabad | Bengaluru | Bhubaneswar | Chandigarh | Chennai | Delhi NCR  
Guwahati | Hyderabad | Jaipur | Kolkata | Lucknow | Pune | Surat | Raipur | Rajkot | Varanasi

 [rioo\\_digital](https://www.instagram.com/rioo_digital)

 [rioodigitallock](https://www.facebook.com/rioodigitallock)

 [RIOO](https://www.linkedin.com/company/rioo)